

An architectural rendering of a modern, multi-story building with a glass facade. The building features large billboards on its exterior, including one with a basketball player and another with the text "time to change up". The ground floor is a glass-walled entrance area with people walking around. The overall scene is in a light, semi-transparent style.

COMPANY PROFILE

EPG Consultants Pvt. Ltd.

EPG
Innovative designs

INTRODUCTION

EPG CONSULTANTS PVT LTD is a Building Services design consultancy company that provides comprehensive and Innovative design approach for the engineering and design services for various sectors like Power, Data center, IT labs, Infrastructure, IT Base build, IT Interiors, Process Industries, Food Industries, Residential townships, Health care, Pharmaceutical, Retail, Hospitality, Assembly spaces, Institutions, Sports facilities, residential buildings, Mixed Use developments, Captive power plants & solar power system solutions.

EPG is “**Engineering Professionals Group**” Established in **2016** in Bengaluru by industry experienced engineering professionals.

EPG Consultants Pvt Ltd provides building services design solutions for Electrical, HVAC, PHE, Fire safety, Security systems, Automation, Solar systems in compliance with local and international standards.

EPG works as a team with Architects, Interior designers, Structural designers, Landscape consultants, Project managers, clients and with all associates to deliver the project with as per schedule and intended.

We EPG have a proven track record in delivering the required details with quality of work before the target for completion of the works. We respect our clients and their thoughts which enable us to delivers error free, most desired, Industry latest and cost-effective solutions to our clients to fit in the project cost.

All our projects are driven by highly experienced engineering professionals as a team to deliver the high-quality errorless designs and solutions.

SECTORS

- 1.0 Power**
66kV, 110kV & 220kV AIS, Hybrid and GIS
- 2.0 Data centers**
Data centers of all tier classifications and Critical IT labs
- 3.0 Infrastructure**
Master planning, Urban design, IT Parks, Industrial Parks
- 4.0 IT Base build**
Base build and Interior designs for SEZ & Non SEZ IT Buildings, Commercial buildings
- 5.0 IT Interiors**
Interior designs for SEZ & Non SEZ IT Buildings, Residential and Commercial buildings
- 6.0 Industries**
Manufacturing & Process Industries, Food Industries and Textile Industries
- 7.0 Townships**
Rural and Urban residential townships, Gated communities & Smart cities
- 8.0 Healthcare & Hospitals**
Hospitals, Healthcare centers, Medical research centers, Pharmaceutical facilities
- 9.0 Retails & Assembly places**
Retail outlets, Shopping malls, Cinemas, Convention centers, Theaters
- 10.0 Hospitality**
Hotels, Resorts & Club Houses
- 11.0 Institutions**
Residential Schools, Universities & Training Institutes
- 12.0 Assembly spaces**
Convention Centers, Auditoriums, Cinema Halls & Theaters
- 13.0 Sports facilities**
Indoor and Outdoor Sports complexes, Stadiums
- 14.0 Residential & Mixed use developments**
High rise buildings, Gated villa communities & Residential Townships
- 15.0 Captive power plants**
Gas based & Diesel based continuous running substations
- 16.0 Solar power solutions**
Ground mount & roof top solar PV, Solar power stations & Solar Power evacuation

Our Vision

To become most preferred MEP design consultant

To become innovative design solution provider

Our Mission

To provide the best and optimized design solutions as per standards

To provide efficient and innovative designs to optimize investments

OUR TEAM



Vijaykumar CK

Managing Director

Vijaykumar CK is an electrical engineer having more than 26 years of experience in EHV, HV and LV electrical system designs, captive power plants, solar power plants & ELV systems. He was also a founding director for a design and execution company for substations. He has designed and executed the various substations and large power distribution networks for various buildings, Industries and data centers. He is also got huge experience in MEP coordination, conducting feasibility study for existing systems, project planning and execution, Conducting trainings for electrical design & methods of installation. He has got expertise in handle the projects from concept stage to execution stage.

Core expertise

HV & EHV Substation up to 220 kV, Large power distribution Networks, Captive power plants, Solar power plants, Solar power evacuation system, Conducting feasibility study & Due diligence report, MEP Coordination, Project planning, Costing & execution, Inspection & technical support for testing & commissioning of electrical installations, Conducting trainings for electrical design & methods of installation.

Previously worked in

- National Standard Duncan's Ltd
- Davanagere Cotton Mills Ltd
- Sai Lakshmi Industries
- Intel Technologies
- S R Industrial Tech Services
- LEAD Consultancy & Engineering Services India Pvt. Ltd.

Major projects

handled during previous tenure

- Prestige Lake side Habitat -(100 Acres Residential development + 66 KV EHV Substation)
- Prestige Sun Rise Park
- Brigade Brooke Field – IT Park, Bangalore
- Net Magic Data Center – Bangalore
- NxtGen Data Center – Bidadi, Bangalore
- TCDC Data Center – Mumbai
- TCDC Data Center – Pune
- IT Office Interiors – ITPL
- Feasibility study of 24 MW Power Plant & 220 kV Substation & HV/LV Net
- Due Diligence of Park Sheraton Hotel Chennai
- APOH Hospital, Tirupati
- Omega Hospital – Hyderabad
- NENPL – Food factory, Mangaldoi, Assam
- ITC ICML – Food factory , Trichy, Tamilnadu
- Next ACC – Garment Factory, Dhaka, Bangladesh
- Aquarelle – Garment Factory, Malavalli, Karnataka
- EMC2, Blue Ridge, Pune, Maharashtra
- KPMG, Brigade WTC, Kochi, Kerala
- Deloitte-C2, Divyasree Technopolis, Bengaluru
- 1.1MW Solar Power Pant at Abhimani Nelamangala
- 1 MW Solar Power Plant of Supreme Solar Doddaballapur
- 18MW, 66 kV EHV Substation of Premier Power Tech, Near Tumkur

OUR TEAM



Chethan Jois

Director

Chethan Jois is a graduate civil engineer having more than 14 years of experience in Plumbing, water management, water treatment, ELV systems viz rodent repellent & water leak detection system and fire systems. He has designed and executed the various large, medium and small-scale design for various buildings, Industries & data centers. He is also got a large experience in MEP coordination, conducting feasibility study for existing systems, project planning and execution. He is also conducted training for design and methods of installations. He has got expertise in handling the projects from concept stage to execution stage.

Core expertise

Public health engineering, Sewage & Effluent treatment plants, Fire safety systems, ELV systems - Fire Alarm, detection, Public address, Water leak detection & Rodent repellent system, Conducting feasibility study & Due diligence report, MEP Coordination, Project planning, Costing & execution, Inspection & technical support for testing & commissioning of above stated system Installations, Conducting trainings for design & methods of installation

Previously worked in

- Sobha Limited
- WS Atkins India Pvt Ltd
- CPG Consultants India Pvt Ltd
- LEAD Consultancy & Engineering Services India Pvt. Ltd.

Major projects

handled during previous tenure

- Infinity Magnacon IT Office, Kolkata
- TCG-Bengal Eco IT tech park, Kolkata
- Brigade Brooke Field – IT Park, Bangalore
- Net Magic Data Center – Bangalore
- NxtGen Data Center – Bidadi, Bangalore
- TCDC Data Center – Mumbai
- TCDC Data Center – Pune
- NENPL – Food factory, Mangaldoi, Assam
- ITC ICML – Food factory, Trichy, Tamilnadu
- Shairu Gems – Diamond Factory, Surat, Gujarat
- Next ACC – Garment Factory, Dhaka, Bangladesh
- Aquarelle – Garment Factory, Malavalli, Karnataka
- Parkway Hospital, Mumbai
- APOH Hospital, Tirupati
- Omega Hospital – Hyderabad
- Prestige Sunrise Park – Bangalore -Karnataka
- Myntra Ware house, Bengaluru
- Myntra Ware house, Mumbai
- Vivek's Sports Academy, Bengaluru, Karnataka
- Sunderland Osprey Key – Etihad Village A high-rise residential development –Abu Dhabi.
- Osprey Quay – Portland Marina. (Restaurant, Facilities, Boat work shop and Service buildings)
- Liverpool School of Academy- Liverpool.
- Sunderland Sports and Social Centre- Sunderland, England

OUR TEAM



Krishnamurthy A

Director

Krishnamurthy Anjanappa is a graduate electrical and electronics engineer having more than 14 years of experience in HV & EHV substation up to 110 kV, LV power distribution networks, captive power plants, solar power plants, ELV systems viz CCTV system, access control system, nurse call system, patient queuing system, home automation systems. He has designed and executed the various substations, large, medium & small-scale power distribution networks for various buildings, Industries and Data Centers. He is also got huge experience in MEP coordination, conducting feasibility study for existing systems, project planning and execution. He has got expertise in handling the projects from concept stage to execution stage.

Core expertise

HV & EHV Substation up to 110 kV, Large power distribution networks, Captive power plants, Solar power plant, Solar power evacuation system, ELV systems – CCTV, Access control system, Nurse call system, Patient queuing system, Home automation systems, Perimeter security systems, Gate security systems, Conducting feasibility study & Due diligence report, MEP Coordination, Project planning, Costing & execution, Inspection & technical support for testing & commissioning of electrical installations, Conducting trainings for electrical design & methods of installation

Previously worked in

- WS Atkins India Pvt Ltd
- CPG Consultants India Pvt Ltd
- LEAD Consultancy & Engineering Services India Pvt. Ltd.

Major projects

handled during previous tenure

- Brigade Brooke Field –IT Park
- Infinity Magnacon IT Office, Kolkata
- Prestige Technostar IT Office, Bengaluru
- Net Magic Data Center – Bangalore
- NxtGen Data Center – Bidadi, Bangalore
- TCDC Data Center – Mumbai
- TCDC Data Center – Pune
- RCS office, Trivandrum
- NENPL – Food factory, Mangaldoi, Assam
- ITC ICML – Food factory , Trichy, Tamilnadu
- Shairu Gems – Diamond Factory, Surat, Gujarat
- Next ACC – Garment Factory, Dhaka, Bangladesh
- Aquarelle – Garment Factory, Malavalli, Karnataka
- Parkway Hospital, Mumbai
- APOH Hospital, Tirupati
- Omega Hospital – Hyderabad
- British High commission, New Delhi
- HP, DLF Cyber Green, Gurgaon
- Fidelity, TRIL, Chennai, Tamilnadu
- EMC2, Blue Ridge, Pune, Maharashtra
- KPMG, Brigade WTC, Kochi, Kerala
- Deloitte-C2, Divyasree Technopolis, Bengaluru
- Myntra Ware house, Bengaluru & Mumbai
- Vivek's Sports Academy, Bengaluru, Karnataka
- The Emerald Palace, The Palm Jumeirah, Dubai – Hotel, Apartment & villas
- Indirapuram Habitat center, Indirapuram, Ghaziabad – Mixed use Development

OUR SERVICES

1.0 Electrical

EHV and HV Substations, HV & LV Small power distribution systems, SCADA systems, UPS distribution, Lighting design, Emergency lighting, Lighting automation, Earthing systems & Lightning protection systems

2.0 HVAC

Air conditioning, Critical room air conditioning, Ventilation system, Pressurization system, Industrial Process cooling system, Inert Gas systems, Free cooling systems, Compressed Air system & Integrated Building Management Systems.

3.0 Public health Engineering (PHE)

Plumbing, Sanitary, Water distribution systems, Water management, Rainwater systems, Water treatment plants, Sewerage treatment plant, Effluent treatment plant

4.0 Fire systems

Fire protection, Fire detection, Fire alarm, Public address and suppressions systems

5.0 ELV systems

Home automation system, Rodent repellent & Water leak detection system

6.0 Security systems

Building perimeter security, Gate security, CCTV & Access control system

7.0 Solar systems

Ground mount & Roof mount solar solutions, Solar power evacuations solutions

8.0 Feasibility studies

Feasibility study and analysis of existing systems & Third part review for MEP Design

9.0 Revit and BIM

MEP models in Revit with clash detection reports

OUR WORK FLOW

1

Project Feasibility

Understanding the project requirements & Strategy

2

Concept Stage

Estimating load requirements, Various options for distribution systems and Concept flow diagrams.

3

Design Development

Equipments sizing, Space planning, Design basis report, Budgetary estimates.

4

Detailed Design

Preparation of System calculations, Detailed single line diagrams and Tender layouts, Technical specifications, Bill of materials & quantities and Detailed cost estimations.

5

Tender Stage

Pre-bid meeting technical support to the client or PMC and technical evaluation of bid documents.

6

Construction Stage

Providing the Good for construction drawings to support the construction activity. Verifying the Shop drawings and approve the equipments with respect to technical parameters.

7

Supervision

Coordination with other services for smooth implementation and execution of the project. Periodical site visits to verify the work quality. Providing the quality works report.

8

Testing and commissioning

Providing the support for testing and commission of the systems at site as per the requirements.

ONGOING PROJECTS

- 1.0 30MW Data Centre for Bridge Data Centre, Navi Mumbai
- 2.0 The Koramangala club, Koramangala, Bengaluru
- 3.0 JA Data Centre at Muscat, Sultanate of Oman
- 4.0 Factory for Plansee India at Mysuru
- 5.0 Puma 100Ft Retail Shop at 100ft Road, Indiranagar, Bengaluru
- 6.0 AKIRA Mixed use development, JP Nagar, Bengaluru
- 7.0 Oncology hospital, Chittagong, Bangladesh
- 8.0 Granuer international school, Bengaluru
- 9.0 Dwelling among those trees, Mixed use development, Bengaluru
- 10.0 Commercial Space for Vishnu Priya Group at OMR, Bengaluru
- 11.0 ITC FCPL, Revamping electrical works, Hosakote, Bengaluru
- 12.0 VPG Springfield Commercial Complex at JP Nager, Bengaluru
- 13.0 School for Samarthana trust at JP Nagar, Bengaluru
- 14.0 Shopping mall at Thrissur, Kerala
- 15.0 VDB Club, Bengaluru
- 16.0 Factory for Sahyadri electricals at peenya, Bengaluru
- 17.0 Commercial building for Vaishnavi Group at Koramangala
- 18.0 RVNL Commercial building, Cantonment, Bengaluru
- 19.0 Hostel at HSR layout, Bengaluru
- 20.0 Commercial Interior for Indiqube at Ramky, Hyderabad
- 21.0 Commercial Interior for Indiqube at The Leela, Mumbai
- 22.0 Commercial Interior for Indiqube at Park Plaza, Pune
- 23.0 Commercial Interior for Indiqube at ICC Devi, Pune
- 24.0 Commercial Interior for Indiqube at The Kode, Pune
- 25.0 Commercial Interior for Indiqube at The Logos, MG Road, Bengaluru
- 26.0 Commercial Interior for Indiqube at Unity Towers, Pune
- 27.0 Commercial Interior for Indiqube at Prestige Loka, Bengaluru
- 28.0 Residential towers at Horamavu, Bengaluru
- 29.0 Karthick residence, JP Nagar, Bengaluru

ONGOING PROJECTS

- 30.0 VPG Commercial, Ramagondanahalli, Bengaluru
- 31.0 Convention centre at Padubidre
- 32.0 White spring Serena Residential development, Bengaluru
- 33.0 42Estates Queens Square master plan and Villas, Bengaluru
- 35.0 Desai's Residence at Malleshwaram, Bengaluru
- 36.0 Bhuwalka Residence, Indiranagar, Bengaluru
- 37.0 DNA OPUS Residential Development, Whitefield, Bengaluru
- 38.0 Mr. Madhusudan's Residence at EPSILON, Bengaluru
- 39.0 Villa Development at Areacode, Kerala
- 40.0 Apartment at Kengeri, Bengaluru

COMPLETED PROJECTS

- 1.0 JRG food factory, Yadehalli, Bengaluru
- 2.0 KPMG, Modification of electrical works, Kochi, Kerala
- 3.0 PUMA office, Indiranagar, Bengaluru
- 4.0 Technical Due diligence and power quality Audit for Puma Ware house BY DHL in Mayasandra
- 5.0 BBS Commercial Office space, Mysuru
- 6.0 Reckitt Benckiser, Mysuru
- 7.0 Supreme solar Factory, Doddaballapura, Bengaluru Rural
- 8.0 ITPB Ascendas Creator electrical modification, Bengaluru
- 9.0 Supreme solar Factory, Doddaballapura
- 10.0 Nxtgen Data centre Technical due diligence, Bengaluru
- 11.0 Engineering Industry, Summanahalli, Bengaluru
- 12.0 Commvault Interior Technical Due diligence, Hyderabad
- 13.0 SJR Pavilion, Base Build Technical Due diligence, Bengaluru
- 14.0 Commvault Interior Facility Technical Due diligence, Pune
- 15.0 1.1 MW Solar power evacuation for Abhimani Publications, Nelamangala, Bengaluru.
- 16.0 1.1MW Solar power evacuation for Supreme solar, Doddaballapura
- 17.0 18 MW Ground mount solar power, 2 x 12.5MVA, 66/11 kV Substation 11 kV ESCOM metering Pooling
- 18.0 BGS Educational Institution, Ramanagara, Bengaluru
- 19.0 Southern star Hotel, Mysuru
- 20.0 Villa development, JP Nagar, Bengaluru
- 21.0 Niramayaa Presidential Villa Benaulim Beach, Goa
- 22.0 Convention hall at Ramanagara



Granuer International School



AKIRA, Mixed Use, Bengaluru



The Koramangala Club



NPR, Goa



Desai's Residence, Bengaluru



Samarthana trust School



The Koramangala Club



Residence for Mr. Madhusudhan, EPSILON



42 Estates Queen's Square



Granuer International School



NPR, Goa

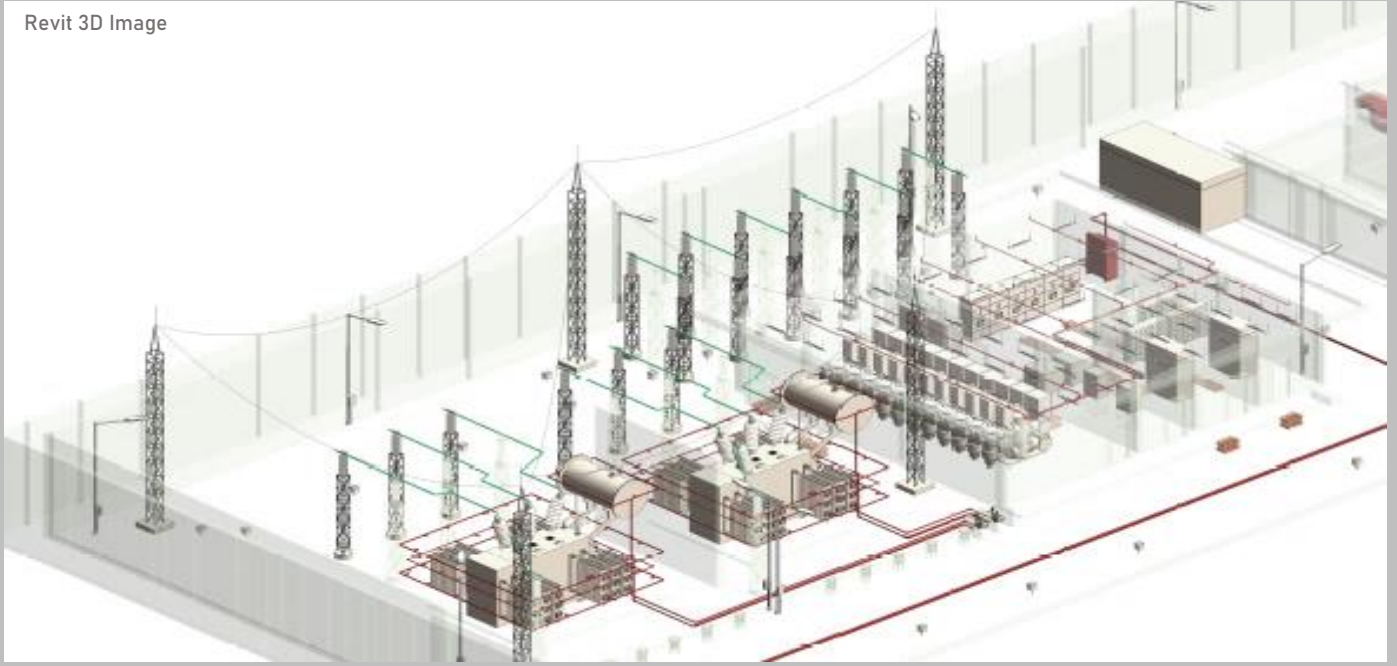


42 Estates Queen's Square

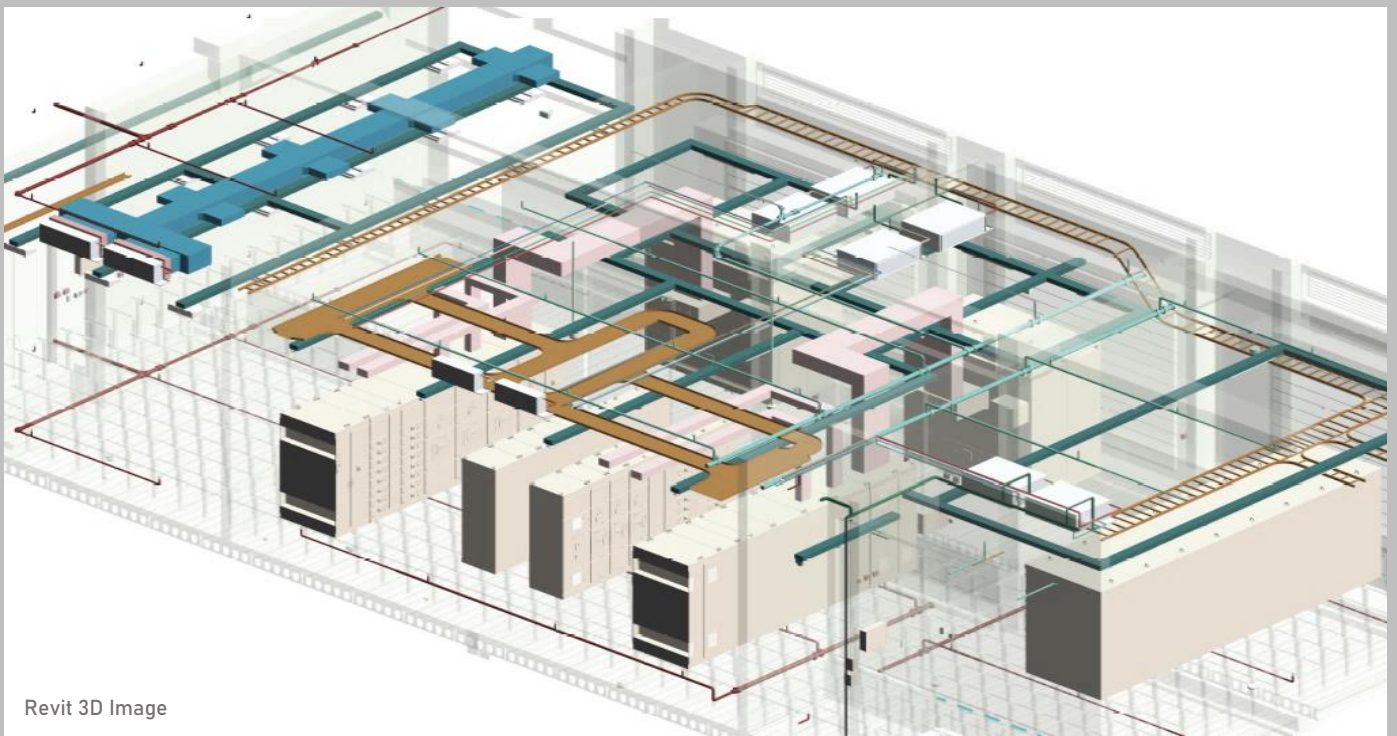
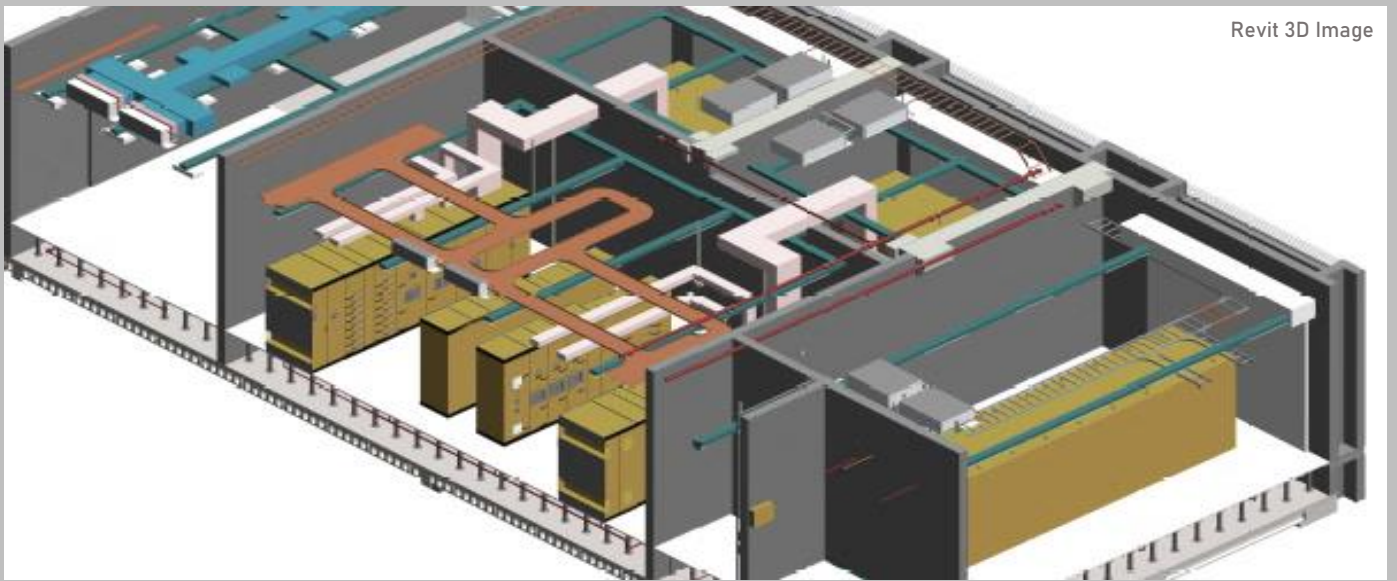


42 Estates Queen's Square

Revit 3D Image

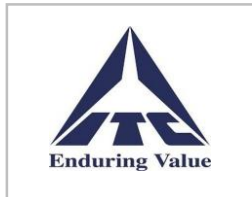


Revit 3D Image



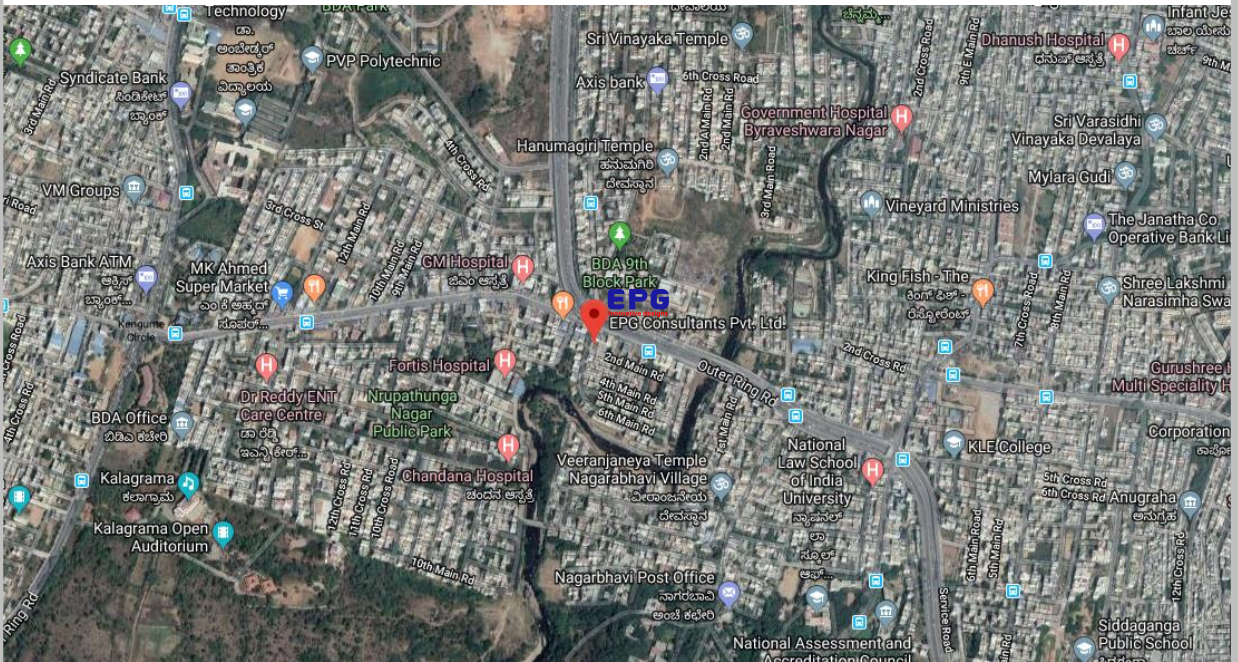
Revit 3D Image

OUR CLIENTS AND ARCHITECTS



CONTACT US

Mr. Vijaykumar	+91 94835 22509	vk@epgconsultants.com
Mr. Chethan	+91 99724 08312	chethanjois@epgconsultants.com
Mr. Krishnamurthy	+91 99808 82164	krishna3thy@epgconsultants.com



REGISTERED OFFICE

EPG Consultants Pvt. Ltd.
#209, 2nd Floor, Panchajanya,
4th Cross, 2nd Main, 2nd Stage
12th Block, Nagarbhavi,
Bengaluru, Karnataka 560072, India

info@epgconsultants.com

www.epgconsultants.com

EPG
Innovative designs